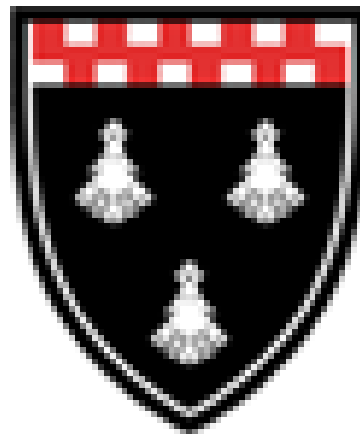




# Ponteland Community High School Extra-curricular clubs, activities and trips

Spring Term 2025



# Extra-curricular clubs, activities and trips

- Included in this brochure is information regarding:
  - 1) PE Department Activities
  - 2) Music Department Activities
  - 3) Other activities by day
  - 4) Study support sessions
  - 5) Use of the library and base areas.
  - 6) Educational trips and visits.
- Please note:
  - Sports training, practices and matches are seasonal and may change later in the year
  - Check the PE noticeboard or speak to the PE staff for updates throughout the school year.
  - We do our best to keep students informed but the best way to find out what is going on is to check the different noticeboards throughout the school and speaking to staff members who run different activities.
  - If information is not available or you are interested in a certain activity that is not included here, please talk to a teacher from that curriculum or subject area.

# PE Department Enrichment, Physical Activity & School Sport Programme

Week 1	Morning (8:00-8:45am)	Lunch (12:45-2:10pm)	After School (3:30-4:30pm)			
<b>Monday</b>		Girls Futsal Trampolining Darts (Y10-11) Football (Y8-9)	Sports Hall Hall Hall 4G Trampolining Hall			
<b>Tuesday</b>	Badminton Running	Sports Hall Outside	Trampolining Darts (Y10-11) Football (Y10-11)	Hall Hall 4G Girls Football Badminton Boys Rugby (Y7-Y9) Hockey	4G SH Out MUGA	
<b>Wednesday</b>	Futsal (Year 7 & 8)	Sports Hall	Trampolining Darts (Y10-11) Football (Y7-8) Boxing (Y9)	Hall Hal 4G DS Trampolining Cheerleading Basketball (All Years)	Hal Studio Sports Hall	
<b>Thursday</b>			Trampolining Darts Football (Y7 & 9)	Hall Hall Hall	Netball Football (All Years) Cricket Girls Rugby	MUGA 4G Sports Hall Outside
<b>Friday</b>	Cricket	Sports Hall	Trampolining Darts Football (Y10-11) Boxing (Y9)	Hall Hal 4G SH	Girls Cricket (All Years)	Sports Hall

# PE Department Enrichment, Physical Activity & School Sport Programme

## Frequently Asked Questions

Enrichment activities are available for **ALL** students and we have tried to offer a wide range of activities to meet the needs of as many students as possible. Each session is designed for specific year groups and where all year groups are welcome, sessions will take place in individual year groups.

All sessions will begin around 3:30pm and finish by 4:30pm. Students must wear PE kit and bring appropriate footwear and protective equipment (i.e. shinpads, gum shields etc.). Students must arrive at the changing rooms and for new students ensure you remind your parents/carers that you are attending. At the end of the session you do not need to get changed into uniform but remember to take your belongings home with you. For those students attending morning sessions attend school in your PE kit but ensure you change into your uniform ready for school.

All students are welcome to all sessions but please be aware of the type of sessions we are offering. We are very hopeful that inter school competition will start soon and some students will be selected to represent the school in various teams. Students selected will be those who attend sessions or take responsibility for informing us of reasons why they are unable to attend.

Some sessions will involve staff from around the school who have kindly offered their time to support the programme as well as young leaders from 6<sup>th</sup> form and upper school who have expressed an interest in developing their leadership skills. We also have some additional coaches who will lead sessions specifically in certain sporting activities. We expect all students to respect the people leading the sessions

Please note that the following sessions require students to sign up prior to the session.

Trampolining (Monday for Y8 + Y9 & Wednesday for Year 7) – Sessions cost £1.50 per session led by an external coach. Parents can sign up through the Expression of Interest form sent out via email.

# Music Department Enrichment Activities Programme

All lunchtime activities are 1.45 until 2.20 in the Drama Studio

**Day**

**Activity**

**Year Groups**

**Staff Contact**

## Lunchtime Activities

Monday

Brass Band

All year groups

Mr Rosier

Tuesday

Wind Band

All year groups

Mr Rosier

Wednesday

Jazz Band

All year groups

Mr Rosier

Thursday

School Choir

All year groups

Mr Murphy

Friday

String Group

All year groups

Mr Murphy

## After School Activities

3.25 – 4.30 in the Drama School

Monday

Whistling Sheep  
Ceilidh Band

All year groups

Mr Rosier

## Other Clubs and Activities

### Tuesday

Activity	Run by	When	Where	Year Group(s)	Additional Information
Christian Union	Mrs Digby + Mrs Bunce	1.45 – 2.15	F22	All	
Make €5 Grow	Ms Carr + Ms Brown	3.30 – 4.15	S8	Y7 – Y9	

### Wednesday

Activity	Run by	When	Where	Year Group(s)	Additional Information
History of Art	Ms Bambrough	1.45 – 2.15	F2	Y12 + Y13	Staff welcome!
Lego, Meccano + Magnetix	Mrs Briggs	1.45 – 2.15	Library	Y7	
Science Club	Mr Pommells	3.30 – 4.30	G6	Y7 – Y9	
Maths Exam Paper Society	Ms Pickover + Mr Symons	3.30 – 4.30	S15 + s16	Y11	

### Thursday

Activity	Run by	When	Where	Year Group(s)	Additional Information
KS5 Book Club	Ms Emmerson	1.45 – 2.15	F1	Y12 + Y13	Staff welcome!
Chess Club	Mrs Briggs	1.45 – 2.15	Library	Y7 – Y10	
Lego, Meccano + Magnetix	Mrs Briggs	3.30 – 4.00	Library	Y7	
KS3 Art Club	Mr Younger	3.25 – 4.25	G8	Y7 – Y9	

### Friday

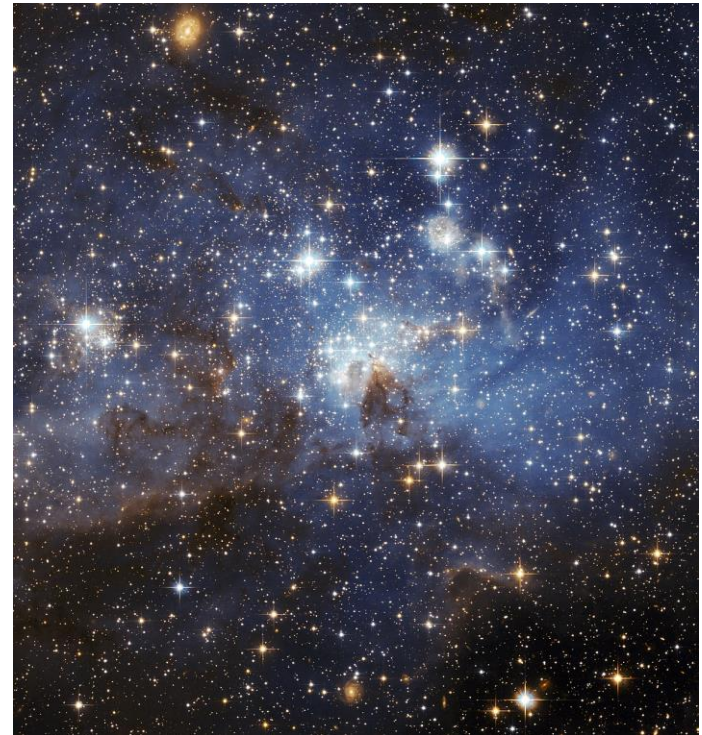
Activity	Run by	When	Where	Year Group(s)	Additional Information
Warhammer Alliance	Mr Clayson	3.30 – 4.45	G7	All	

# Special Events!

## Y7 Harry Potter Night

19<sup>th</sup> February

- Get sorted into houses
  - Create potions
  - Play Quidditch



## Space Club

First Wednesday of every month

Lecture Theatre

All Year Groups

**Come along to find out about new and exciting discoveries from the world of space travel and exploration.**





# KS4 Study Support

## KS4 English Autumn Lecture Series

Join us in the lecture theatre every **Week 2** on a **Wednesday** afternoon at **3:30pm** to explore a key concept from English. Content of the lectures will provide further background or detail to some of the core concepts that you have studied in class and are an excellent opportunity to deepen your knowledge or revise content for the exam.

JPA	<i>Wordsworth's Prelude and The Romantics</i>	A look at Wordsworth's autobiographical poem <i>The Prelude</i> and The Romantic poets in general.	22/01/25
HBR	Is masculinity a construct?	Minor cross-over between A Level Lang and Lit. Links to <i>An Inspector Calls</i> (Gerald, Mr Birling and Eric) as well as <i>Romeo and Juliet</i> (Romeo, Tybalt and Mercutio).	05/02/25
6th Form	<i>Motifs in AIC and Gender in Romeo and Juliet</i>	A look at some key motifs and ideas in <i>An Inspector Calls</i> and ideas relating to gender in <i>Romeo and Juliet</i> .	19/02/25



## Maths Exam Paper Society

Reduce the fear around exams by working with your friends, in a relaxed environment, with support (including biscuits) where needed from maths teachers. One exam paper at a time.

**Wednesday Evening 3:30-4:30 (S15/S16)**



# Use of the Library and the Base

Our library area is a key hub of optional activities during break and lunchtime sessions.

Many students use this as an area for quiet reading whilst others prefer to enjoy one of the many board games available. There is an IT area close by where students can access their Google accounts to work on homework tasks. The library is also the home of our Chess Clubs that are attended by many.



Each year group also has an allocated space for our students to relax in a comfortable environment and enjoy the company of friends during social times.

For some students who need a quiet area to withdraw to or the support of specialist staff during a break or lunch time, the Base is available to meet their needs.



# The Duke of Edinburgh Award Scheme

At Ponteland High School we offer the Bronze, Silver and Gold DofE award. We offer the Bronze DofE award in year 9, the Silver DofE award in year 10 and the Gold DofE award in 6th form or open Gold for those who wish to progress to Gold but who don't stay on for 6th form study.



We encourage our students to do their DofE – regardless of ability, gender, background or location. Achieving an Award isn't a competition or about being first. It's all about setting personal challenges and pushing personal boundaries. There are four sections to complete at Bronze and Silver level and five at Gold. They involve helping the community/environment, becoming fitter, developing new skills, planning, training for and completing an expedition and, for Gold only, working with a team on a residential activity.

Through our DofE programme young people have fun, make friends, improve their self-esteem and build confidence. They gain essential skills and attributes for work and life such as resilience, problem-solving, team-working, communication and drive, enhancing CVs, university and job applications. For further information Visit our school website under Extra Curricular activities > DofE



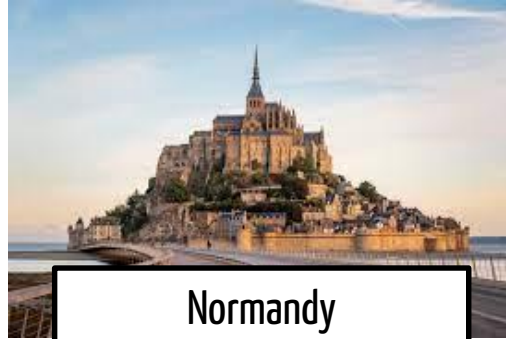


# Trips and Visits

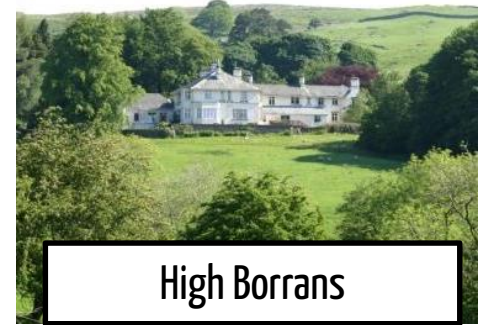
Each year we offer a range of trips and visits. Places are allocated on a trip by trip basis. We keep a record of who has attended each trip so that we can ensure a range of students benefit from the unique learning opportunities they offer.



Berlin



Normandy



High Borran



New York



Paris



Ski



Iceland



York



Madrid